

LUOYANG DOWELL ELECTRONICS  
TECHNOLOGY CO., LTD

# DM SERIES LARGE 3D PRINTER



Whatsapp: +86-17639138101



Whatsapp: +86-18839051575

# >>PRODUCT MANUAL

## ABOUT US

Luoyang Dowell electronics technology Co., Ltd was founded in 31th Dec, 2014. It's a forerunner of massive production and the reasearch and development for the domestic FDM 3D printer.

Our company is committed to the market application of 3D printer, which will provide efficient and affordable 3D printing plan for personnel,family, school and enterprises in order to meet the requirement of each creativity for the benefit, quality and rapid forming.

## OUR FACTORY

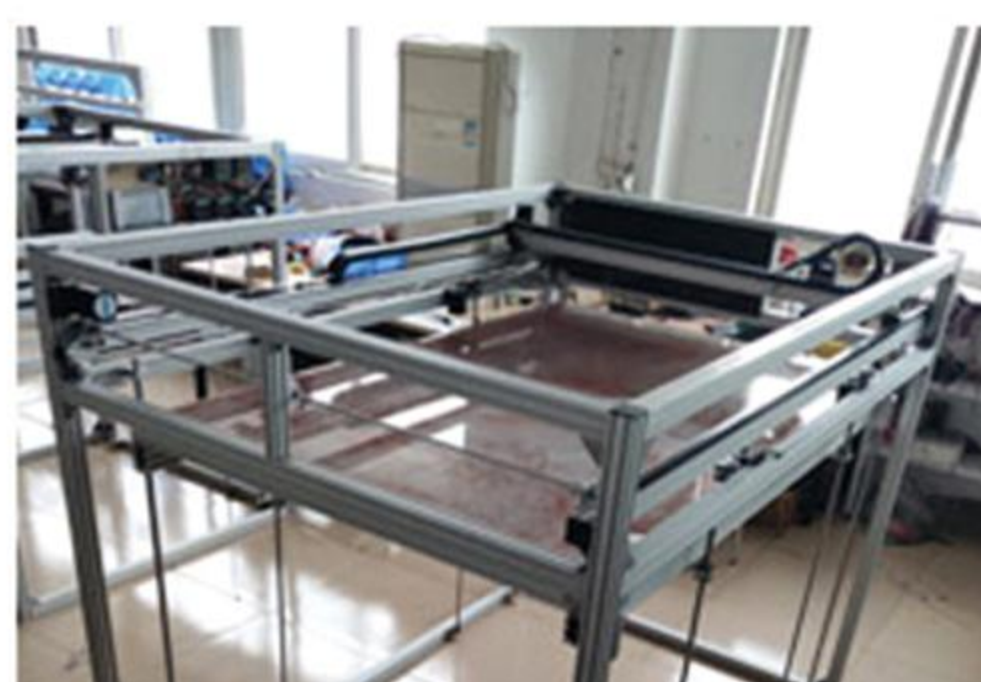
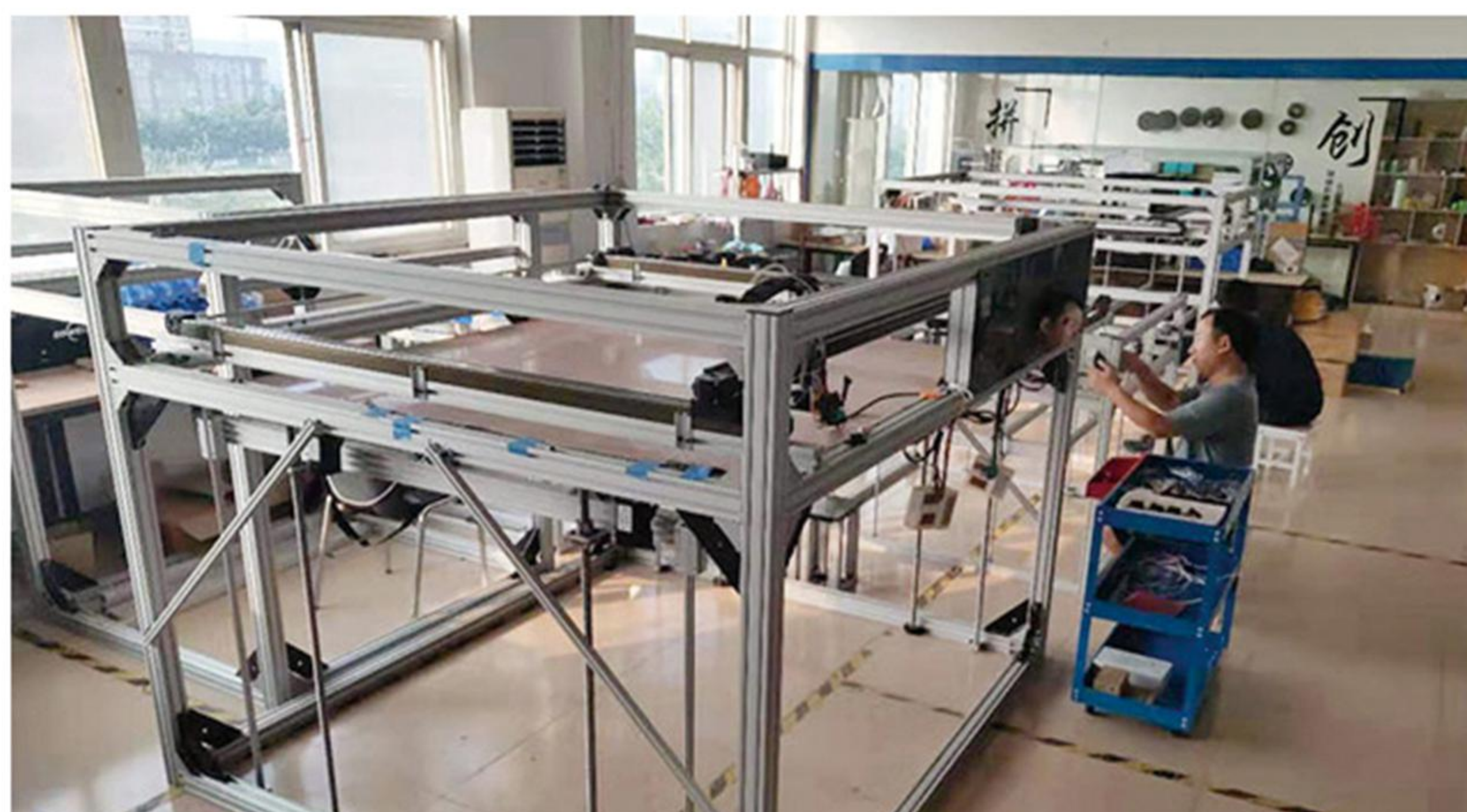
The total area of the factory is around 2000m<sup>2</sup> with more than 1000 sets of printer manufactured per month. Our printer sales to more than 30 countries and areas so we establish a professional large after-sale team. There's not only has the technician provide the operation training for client online, also can provide on-site testing and maintenance service.

## R & D STRENGTH

Our company was located in the millennium capital, Luoyang where are many high school communicated to establish the production, teaching and research base, with a complete system of research and develop, manufacture and after-sale services, has a strong technical strength.

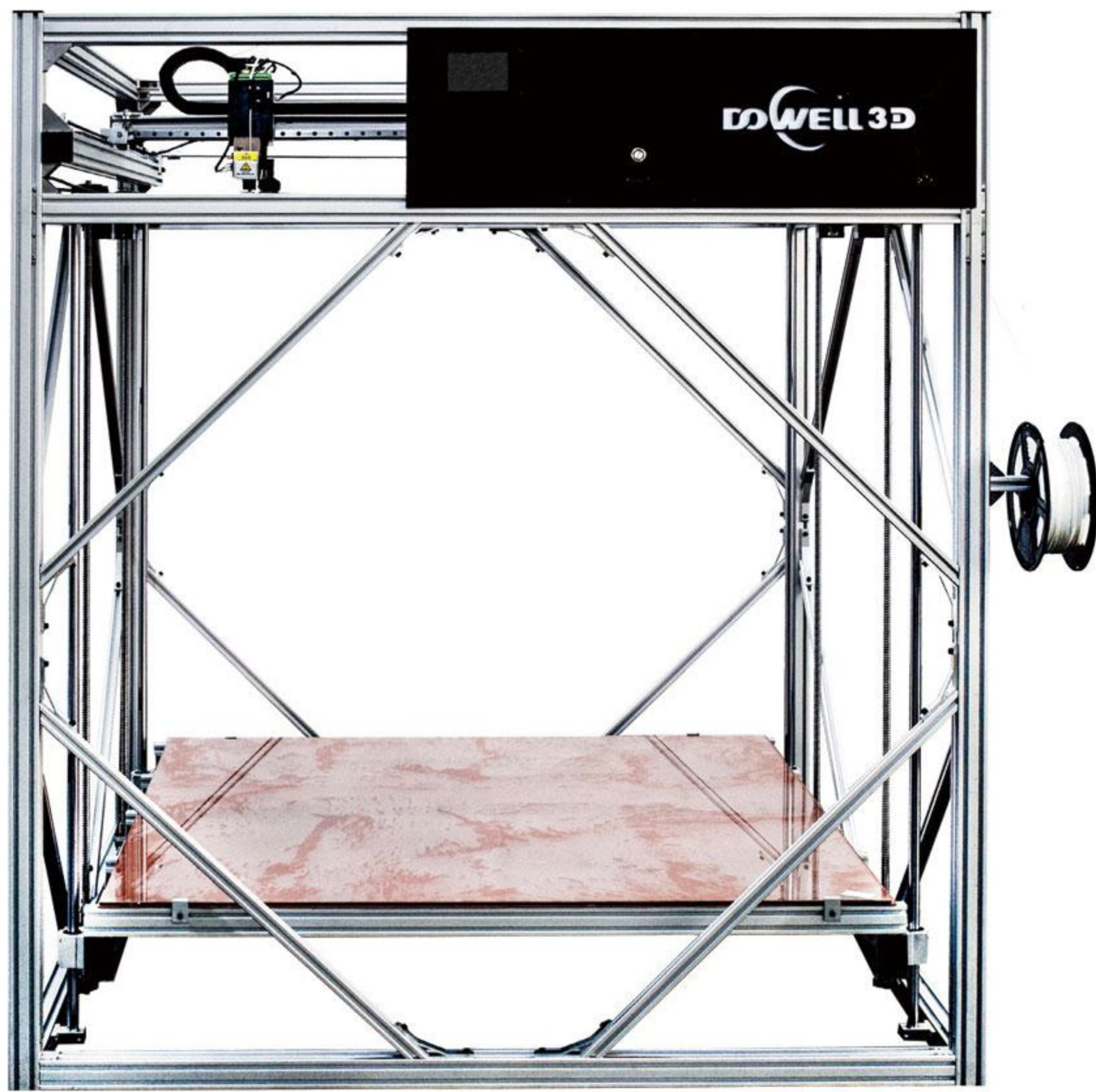


R&D Team from Dowell 3D



# >>PRODUCT OVERVIEWS

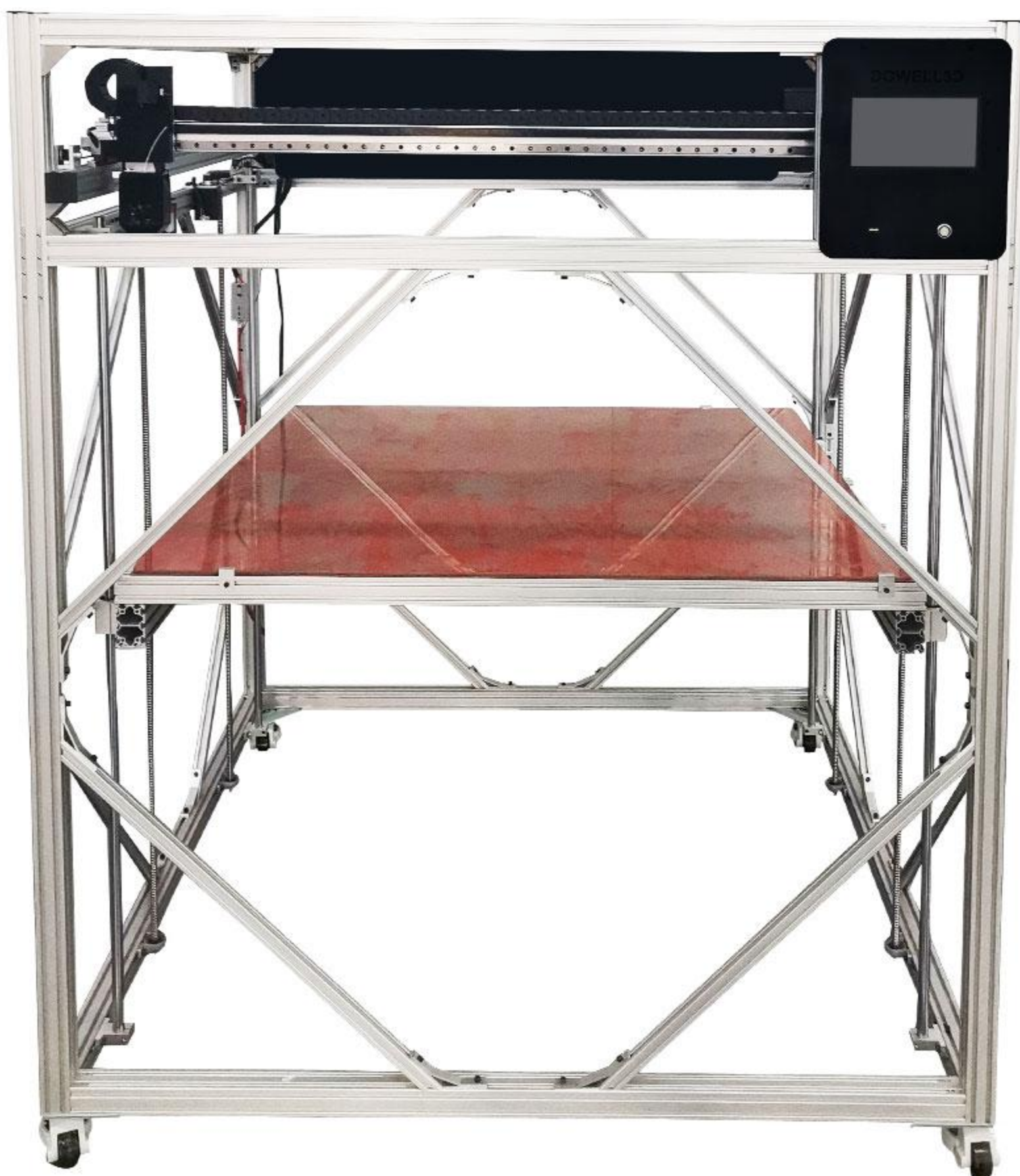
## ➤ **2019 Series**



### **STANDARD SIZE:**

|            |                  |
|------------|------------------|
| DM6:       | 600*600*600MM    |
| DM6-10:    | 600*600*1000MM   |
| DM6-16:    | 600*600*1600MM   |
| DM8:       | 800*800*800MM    |
| DM10-6:    | 1000*1000*600MM  |
| DM10:      | 1000*1000*1000MM |
| DM10-16:   | 1000*1000*1600MM |
| DM1014-6:  | 1400*1000*600MM  |
| DM1014-10: | 1400*1000*1000MM |
| DM1014-16: | 1400*1000*1600MM |
| DM1016-6:  | 1600*1000*600MM  |
| DM1016-10: | 1600*1000*1000MM |
| DM1016-16: | 1600*1000*1600MM |
| DM1018-6:  | 1800*1000*600MM  |
| DM1018-10: | 1800*1000*1000MM |
| DM1018-16: | 1800*1000*1600MM |
| DM12-3:    | 1200*1200*300MM  |
| DM12:      | 1200*1200*1200MM |
| DM12-16:   | 1200*1200*1600MM |
| DM1214-12: | 1400*1200*1200MM |
| DM1214-16: | 1400*1200*1600MM |
| DM1216-12: | 1600*1200*1200MM |
| DM1216-16: | 1600*1200*1600MM |
| DM1218-12: | 1800*1200*1200MM |
| DM1218-16: | 1800*1200*1600MM |
| DM1220-12: | 1950*1200*1200MM |
| DM1220-16: | 1950*1200*1600MM |

## ➤ **2021 Series** NEW



# >>PRODUCT PERFORMANCE

2019 Series



2021 Series

|                    |                     | 2019 Series  | 2021 Series       |
|--------------------|---------------------|--|-------------------|
| Difference         | Touch screen        | 3.5" TFT full color  | 7" TFT full color |
|                    | Hotend temperature  | 0-270C   | 420C              |
| Standard parameter | Essential functions | 1, Auto leveling<br>2, Nozzle anti-collusion to bed<br>3, Auto resume from power off<br>4, Filament sensor |                   |
|                    | Optional functions  | 2.85mm extruder<br>Dual extruder & dual nozzle<br>Dual extruder & single nozzle                            |                   |
|                    | Layer resolution    | 0.04-0.6mm   |                   |
|                    | Position accuracy   | 0.02mm   |                   |
|                    | Printing speed      | 30-150mm   |                   |
|                    | Nozzle:             | 0.4, 0.6, 0.8, 1.0mm   |                   |
|                    | Filament            | 1.75mm PLA, wood, ABS, Nylon, Carbon fiber, TPU, PVA, PETG   |                   |
|                    | Heat bed            | 0-100C   |                   |
|                    | File format         | STL/OBJ/Gcode/Jpg  |                   |
|                    | Connection          | SD card  |                   |

# >>HONOR TO SHOW

Shenzhen POCE Technology Co.,Ltd.  
H Building, Hongfa Science and Technology Park,  
Tangtou, Shiyan, Bao'an District, Shenzhen, China

**Supplier's Declaration of Conformity**

Certificate No. : POCE191217031QCE  
Applicant : LUOYANG DOWELL ELECTRONICS TECHNOLOGY CO.,LTD.  
Address : 501ROOM,BUILDING D,THE TORCH PARK,YANGUANG ROAD,HIGH-TECH ZONE INDUSTRIAL PARK,LUOYANG.  
Manufacturer : LUOYANG DOWELL ELECTRONICS TECHNOLOGY CO.,LTD.  
Address : 501ROOM,BUILDING D,THE TORCH PARK,YANGUANG ROAD,HIGH-TECH ZONE INDUSTRIAL PARK,LUOYANG.  
Product : 3D PRINTER  
Trade Name : N/A  
Model(s) : D2,D, DM, DL, DH, DS, DF  
Test Report No. : POCE191217030NRE

| Applicable Standard      |                         |
|--------------------------|-------------------------|
| FCCPart15SubpartB : 2017 | Radio Frequency Devices |

The EUT has been tested and verified to comply with FCC Part 15 subpart B, Class B digital device requirements.  
The EUT has tested to conform to the applicable FCC Rules and Regulations. The method of testing was in accordance to the most accurate measurement standards possible and that all necessary steps have been enforced to assure that all production units of the same equipment will continue to comply with the Federal Communications Commission's requirements.

**FC**

For Chief Executive / Gao Wang  
Date: Dec. 19, 2018

This certificate of conformity is based on a single evaluation of the submitted sample(s) of the above mentioned product. It does not imply an assessment of the whole production and other relevant directives have to be observed.

Web: <http://www.poce-cert.com> Tel: +86-755-29113252 E-mail: [service@poce-cert.com](mailto:service@poce-cert.com)

Shenzhen POCE Technology Co.,Ltd.  
H Building, Hongfa Science and Technology Park,  
Tangtou, Shiyan, Bao'an District, Shenzhen, China

**CERTIFICATE OF CONFORMITY**

Certificate No. : POCE18102513MCE  
Applicant : LUOYANG DOWELL ELECTRONICS TECHNOLOGY CO.,LTD.  
Address : 501ROOM,BUILDING D,THE TORCH PARK,YANGUANG ROAD, HIGH-TECH ZONE INDUSTRIAL PARK, LUOYANG.  
Manufacturer : LUOYANG DOWELL ELECTRONICS TECHNOLOGY CO.,LTD.  
Address : 501ROOM,BUILDING D,THE TORCH PARK,YANGUANG ROAD, HIGH-TECH ZONE INDUSTRIAL PARK, LUOYANG.  
Product : 3D PRINTER  
Trade Name : 点维  
Model(s) : D2, D1, DM, DL, DH, D,DS, DF  
Test Report No. : POCE18102513MRE  
Test Standards : EN 55032:2015  
EN 55035:2017  
EN 61000-3-2:2014  
EN 61000-3-3:2013

The EUT described above has been tested by us with the listed standards and found in compliance with the council EMC Directive 2014/30/EU. It is possible to use CE marking to demonstrate the compliance with this EMC Directive.

**CE**

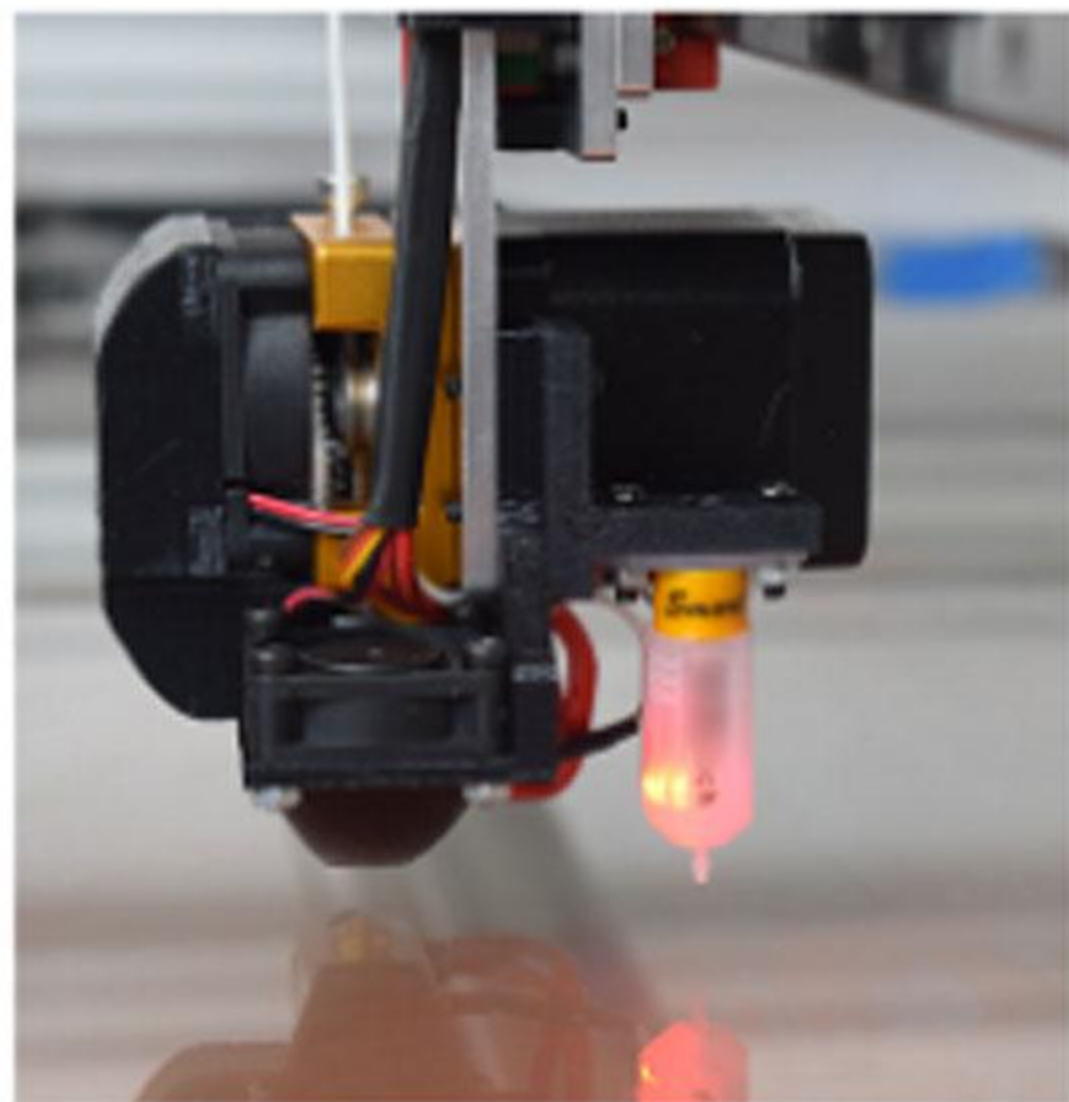
For Chief Executive / Gao Wang  
Date: Oct. 30, 2018

This certificate of conformity is based on a single evaluation of the submitted sample(s) of the above mentioned product. It does not imply an assessment of the whole production and other relevant directives have to be observed.

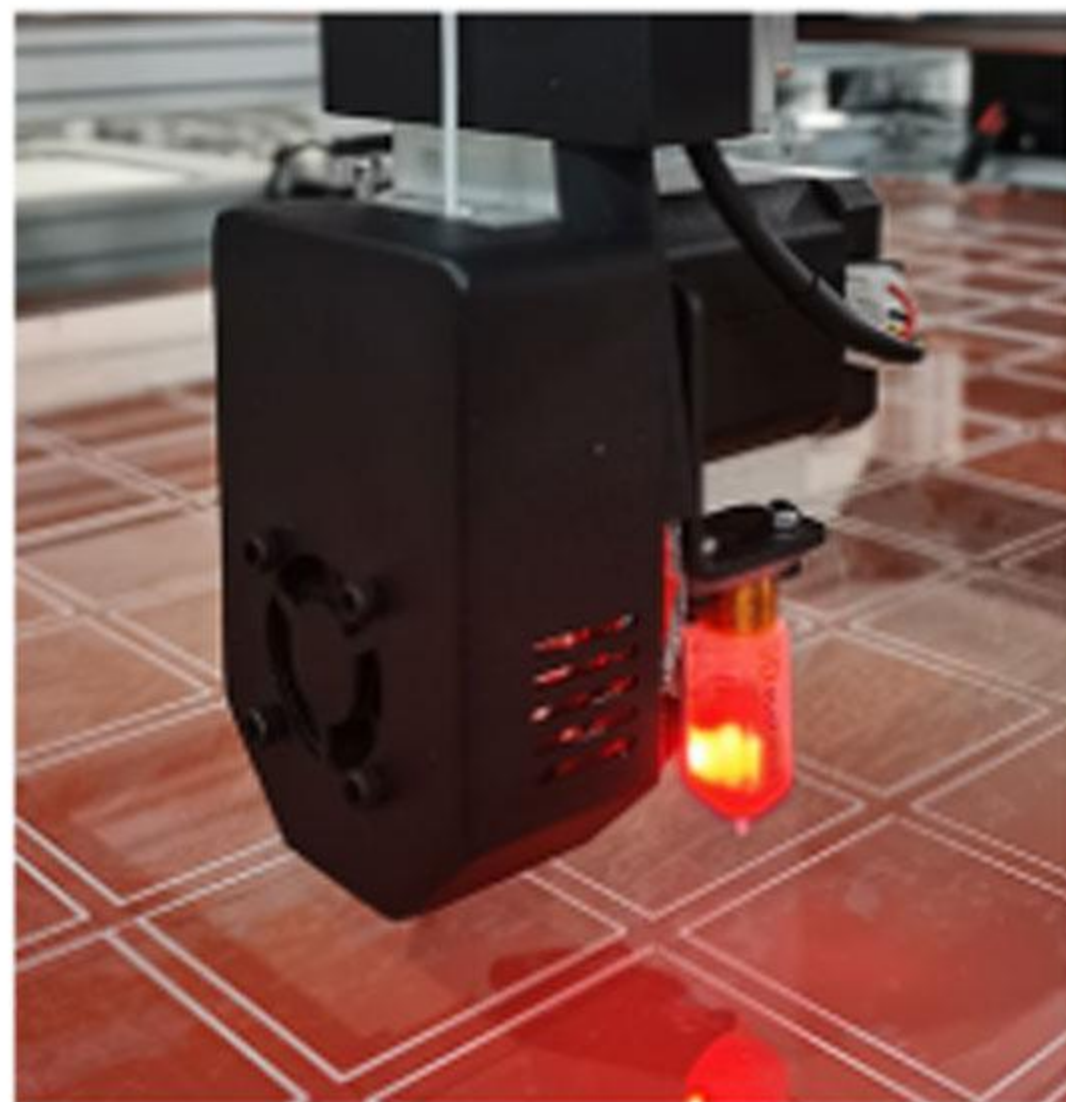
Web: <http://www.poce-cert.com> Tel: +86-755-29113252 E-mail: [service@poce-cert.com](mailto:service@poce-cert.com)

NO.0181687

# 2019 VS 2021



19



20

2019 series: nozzle temperature from 0-260C  
 2021 series: nozzle temperature 420C, equipped with sheet metal protection enclosure.



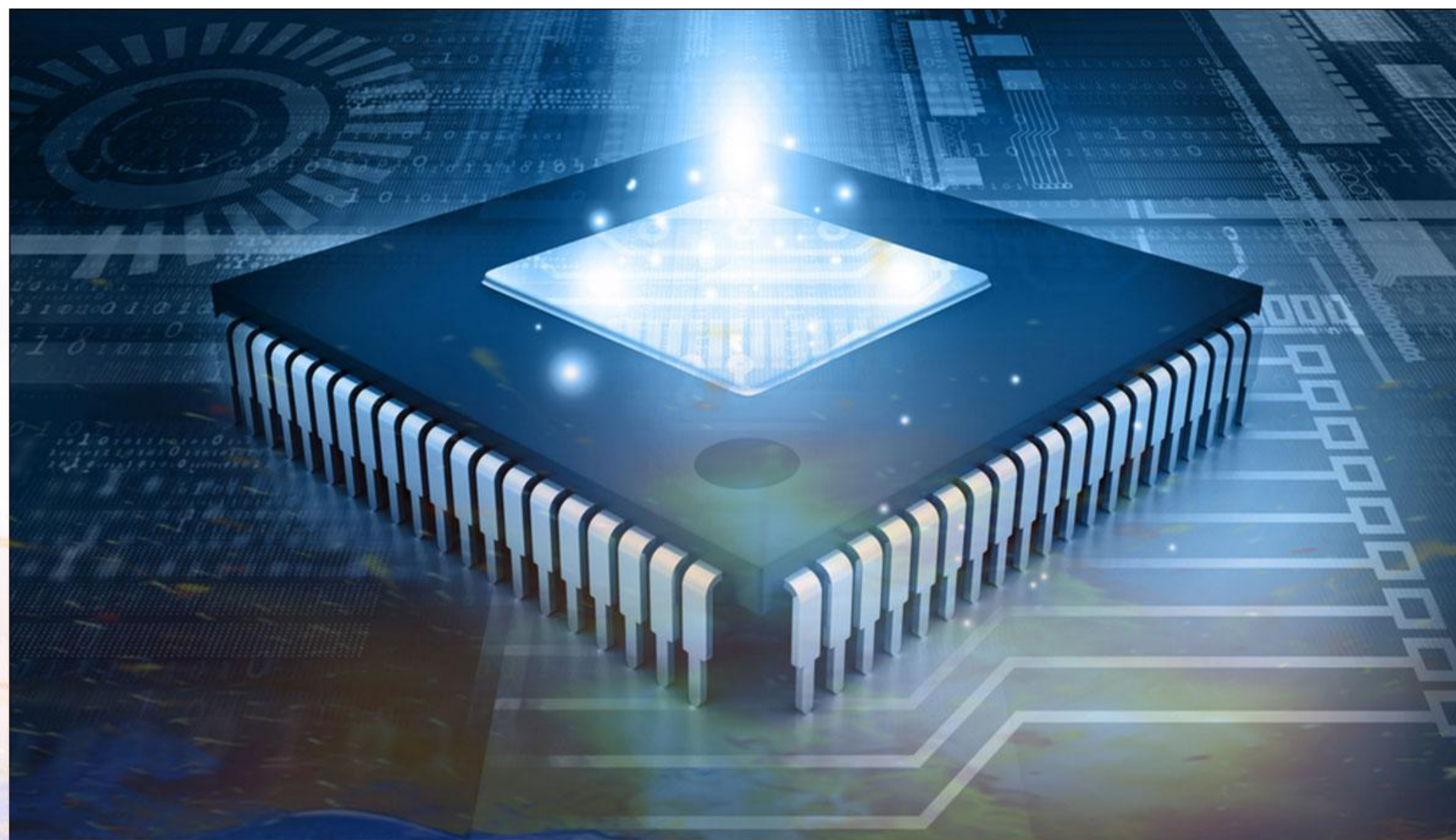
19



21

2019 series: screen size is 3.5 inch.  
 2021 series: screen size is 7 inch.

## 2019



## 2021

Compared with 2019 series, 2021 series has been significantly upgraded boards, with improved chipsets and component layouts, it had a more stronger performance, it added more functions and more stable operation.

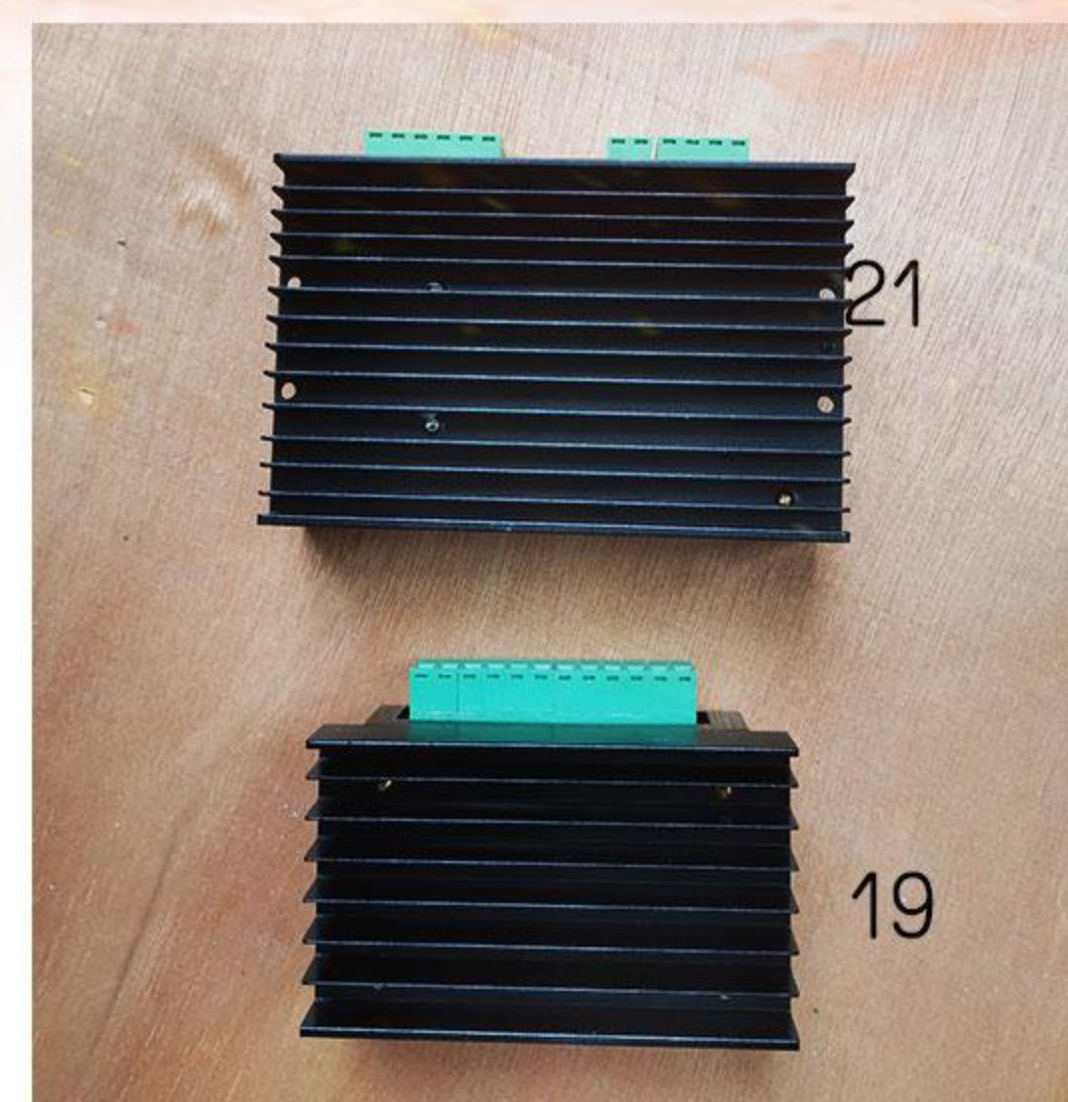


19



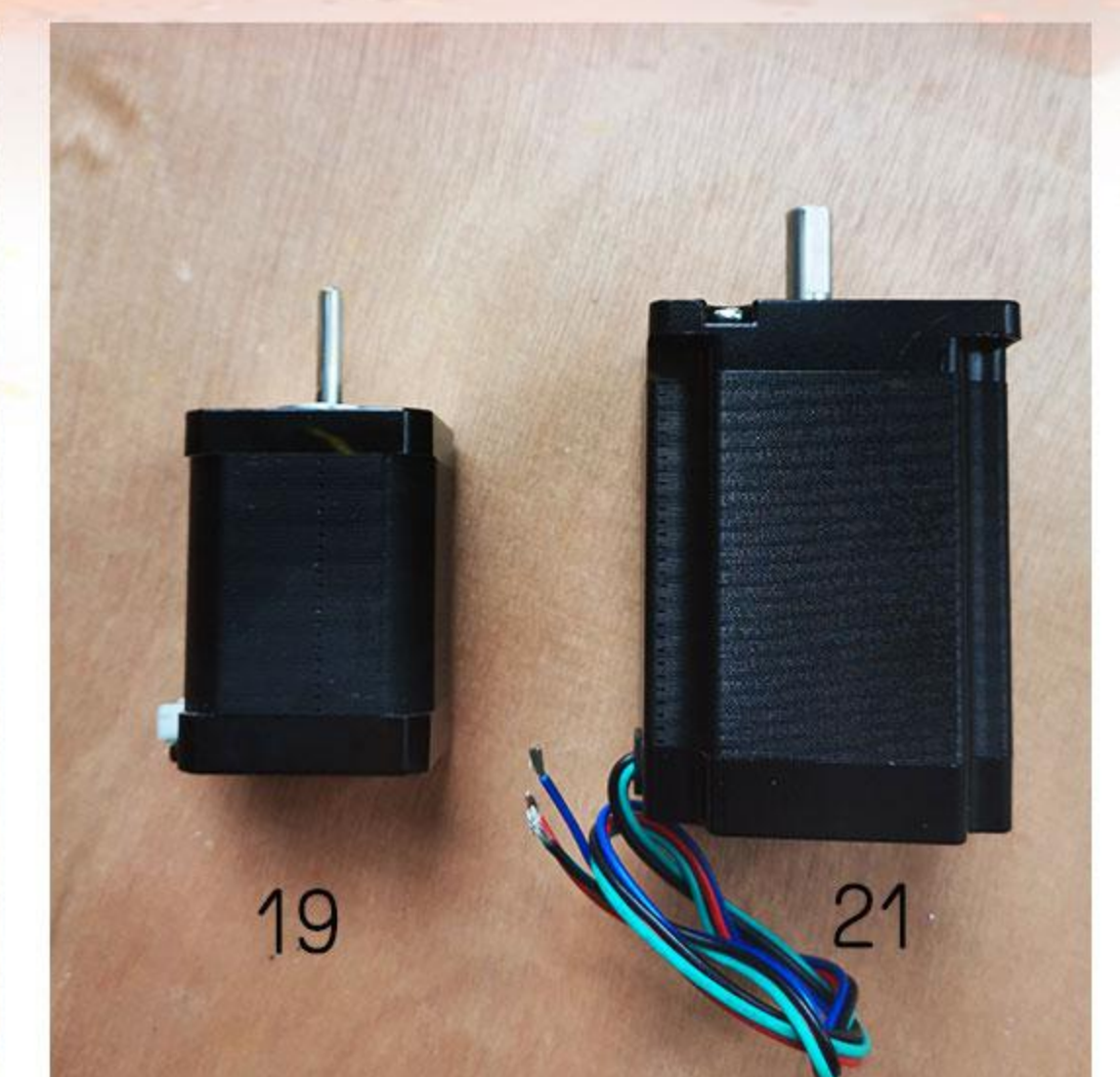
21

Compared with 2019 series, 2021 series has been enlarged the area of the front viewing window, it's more convenient to observe the printing effect of the mold and the running state of the machine.



Driver

Driver: 2019 series: normal driver  
 2021 series: quiet drive, reducing the noise in the work to one fifth of the original noise, about 20 dB.  
 Motor: 2019 series: 24 motor  
 2021 series: 57 motor



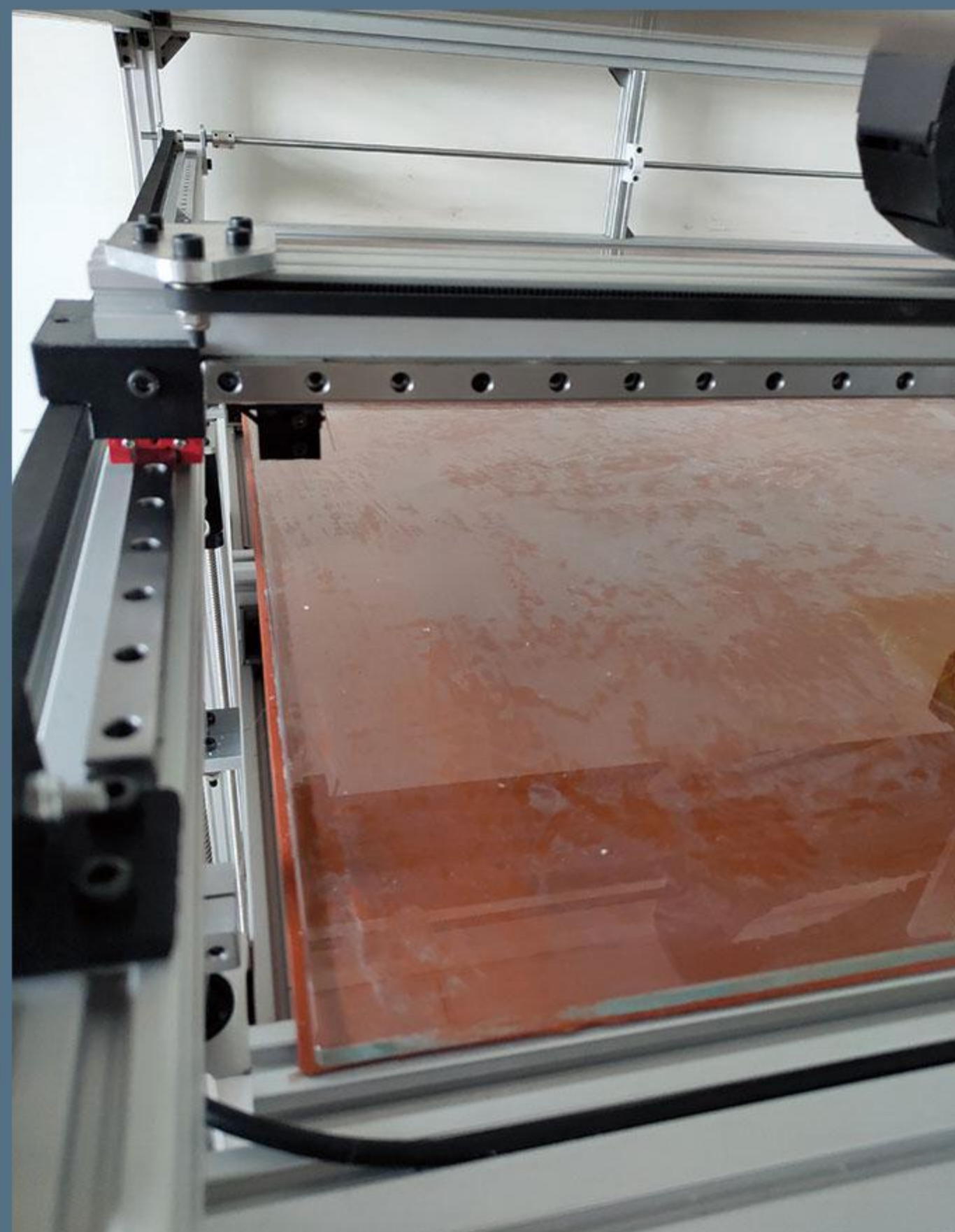
Motor

# >>PRODUCT DETAILS



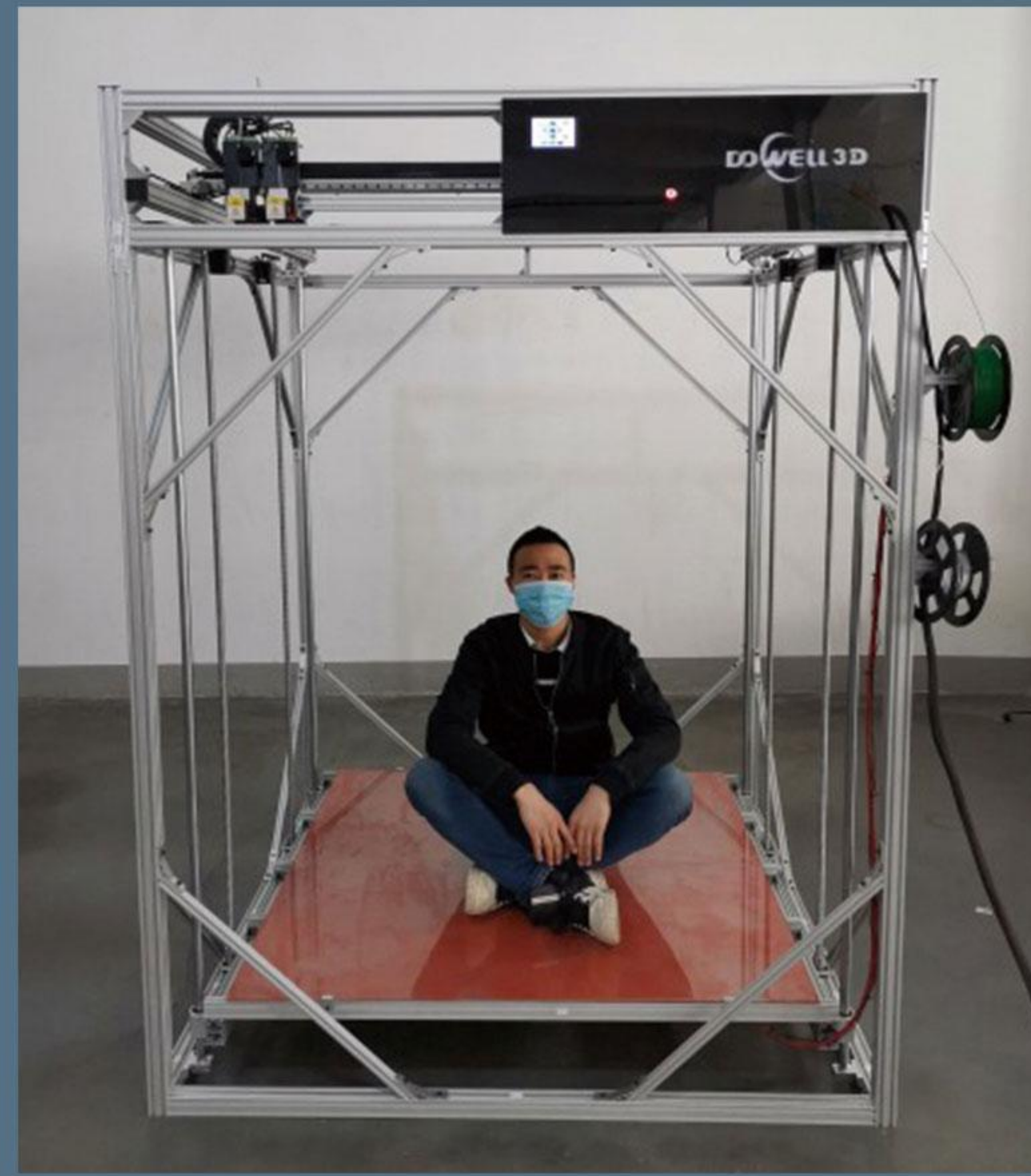
**Frame**

About large 3D printer, it's very important to have a stable frame. We preferred 40mm section aluminum.



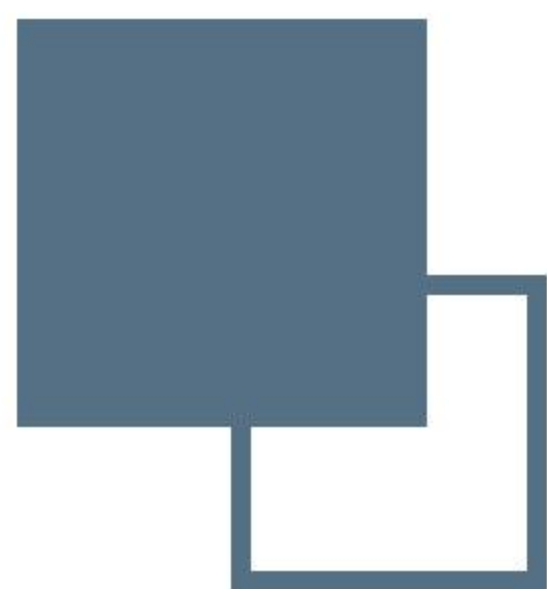
**Linear guide rails**

Both of movement of X and Y axis are straight guide rails.

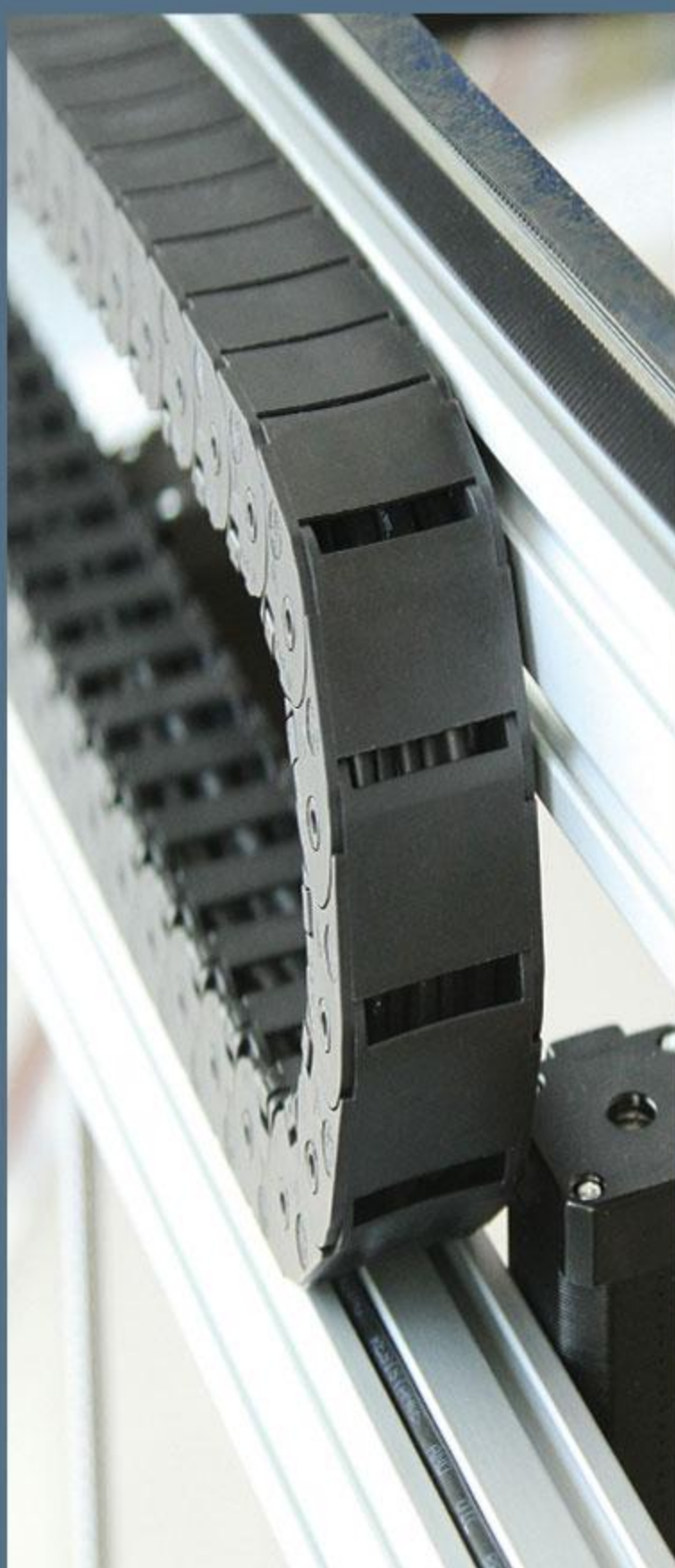


**Bearing of bed, very stable**

With high flatness. It can bear the weight of an adult moving up and down.

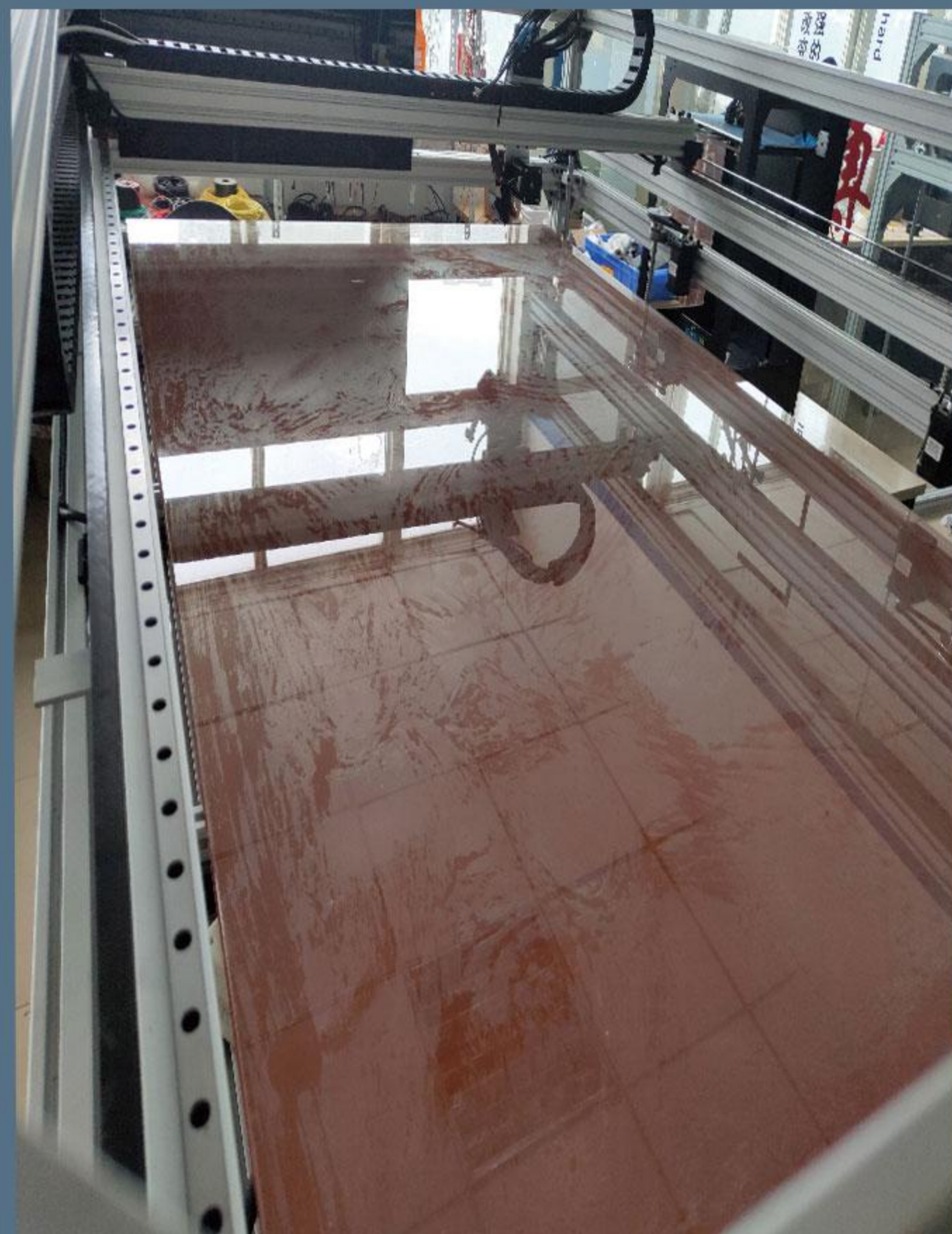


24-hours online technical support  
 Whatsapp: +86-17639138101  
 Wechat: dowell3d  
 Email: sales@dowell3d.cn



**High-quality wire**

Using 40 tank chain and dedicated super flexible wire which can bears the bent. With a beautiful outfit, it can solve the problem of the lines.



**Heating bed**

8mm tempered glass. Our bed can be heating up to 100C fast. Input voltage is 110V/220V. Very simple operation.



**Filament sensor**

Product inventory available and quotation request e-mail to [sales@dowell3d.cn](mailto:sales@dowell3d.cn)

# >>PRAISE AND FEEDBACK

订单编号: 41826414001028409

订单编号: 36957930501022586

Isaac Siraj,Saudi Arabia

按时发货: 非常满意 (5 stars)

供应商服务: 非常满意 (5 stars)

William Sargent,United States

按时发货: 非常满意 (5 stars)

供应商服务: 非常满意 (5 stars)



Large 3d printers, 800x800x800mm

★★★★★

Printer received thanks to the company

[回复该评论](#)



3d printer PLA filament

★★★★★

Printer received thanks to the company

[回复该评论](#)

Lucas van Beers 2019-12-5 08:49:55



Lucas van Beers 2019-12-5 08:50:04

I printed the bike frame with your printer!

Lucas van Beers 2019-12-5 09:03:05

Thanks

Lucas van Beers 2019-12-5 09:03:32

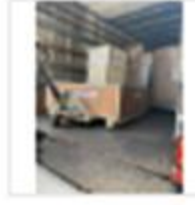
The printers works quit well so far. It printed for 8 days without a fail



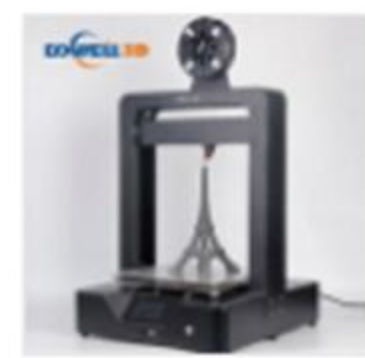
Big 3D printer 1000\*1000\*1000mm, with auto l...

★★★★★

Rita and Dowell 3D as a whole are a great, thoughtful, caring group and provide a great 3-D printing manufaturing capabilities with full end to end service! being from NYC and Dealing all the way with China with Dowell has made it a pleasant trandaction! We will use Dowell again... [查看更多](#)



[回复该评论](#)



Dowell D2 DIY digital laser 3D printers

★★★★★

Rita and Dowell 3D as a whole are a great, thoughtful, caring group and provide a great 3-D printing manufaturing capabilities with full end to end service! being from NYC and Dealing all the way with China with Dowell has made it a pleasant trandaction! We will use Dowell again... [查看更多](#)



[回复该评论](#)

发送者\* luc : b dr : @gmail.com

( IP : 209.85.219.43 )

收件人 Dowell 3D printer <fatima@dowell3d.cn>

发送时间2019-12-18 11:01:36 接收时间 2019-12-18 11:01:56 归属者 袁雪妮

是否处理: 是

主题 Re: Re: Re: Re: Re: Re: Re: Re: Re: Re: 3D Printer From Dowell withgoodpricean

内容

HELLO, THANKS FOR THE MACHINE , IT WORK WELL AT HIS TIME.

# >>PRINTING FROM CUSTOMERS



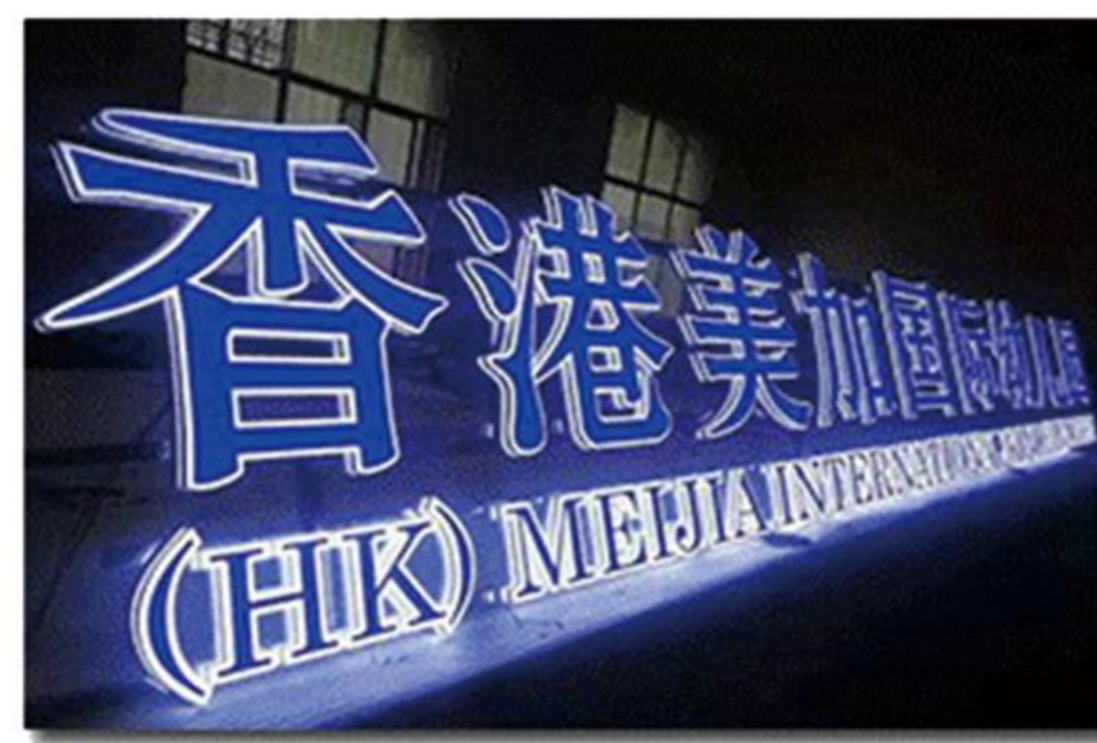
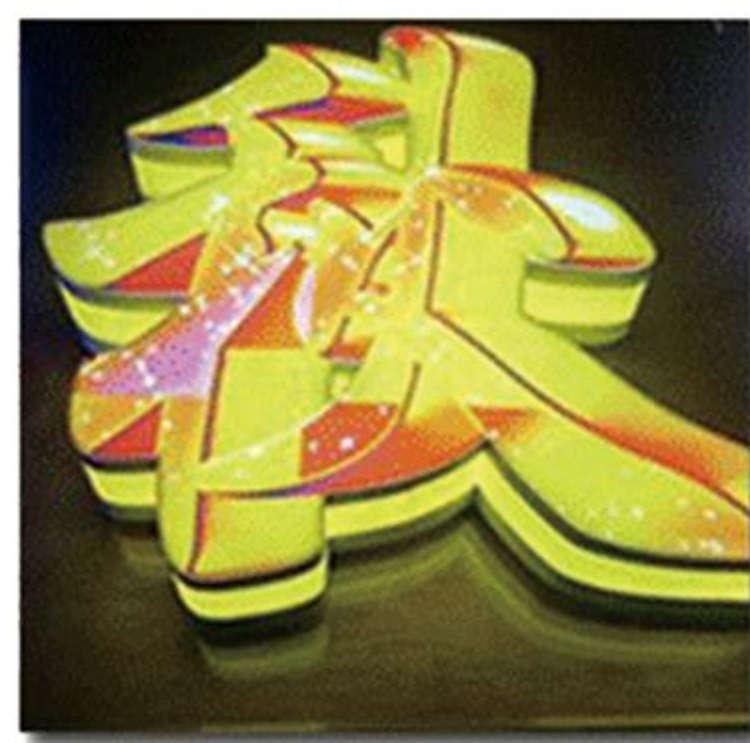
Feedback from Netherlands clients



Feedback from Whale song in New zealand



Feedback from USA clients



Feedback from 3D printer for advertising letters

Product inventory available and quotation request e-mail to [sales@dowell3d.cn](mailto:sales@dowell3d.cn)

# >>BUYING GUIDE

## Payment

T/T (wire transfer), Paypal, West union, Credit card, Wechat pay, Ali Pay

## Shipping

DHL, UPS, Fedex, TNT, sea shipping, air freight

## Lead time

If the product you order is our standard model, lead time is around 14 days; or else lead time is around 21 days.

## Quality

We have 100% tests before shipment. We will supply photos and video of tests before shipment. We can guarantee that our 3D printer will have absolutely no quality problems before shipment. Then we will arrange the shipping under the confirming of the buyer.

## Package, custom clearance and delivery

Our products is packaged with very strength wooden box, it is possible to have damage in transportation.

Please double check whether the package is damaged or not before you sign the package.

We have insurance for every shipment, so if the package is damaged, please take photos of damaged package as evidence.

If buyer refuse to sign the package without any damage of package, the buyer has to pay all charges of returned goods. Don't worry about damage in transportation.

We will send replacement parts free of charge.

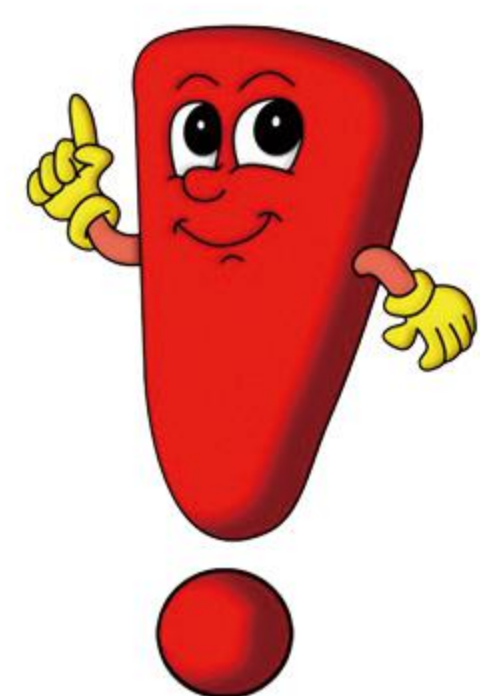
No matter what kind of shipment, the buyer has the responsibility for helping handling with the custom clearance and related.

If there's extra charges due to the buyer's non-cooperation, the buyer has the responsibility for it.

## Alibaba trade assurance order and Paypal

If the buyer is plan to use the Alibaba trade assurance order or Papypal, please read this clause carefully. Within the Alibaba trade assurance order system and Paypal, we do not accept "refund applications" and "refusing payment (credit card)" for any reasons. If the buyer insists on submitting the "refund application" and "rejection application", the buyer will be deemed to have automatically waived the warranty and free technical support provided by us. At the same time, the buyer must return all products in the order and pay all related charges . We will write this clause into the contract, the Alibaba trade assurance order and the terms of Paypal.

Once the buyer pays the Alibaba trade assurance order or Paypal, it will be deemed to have accepted this clause.



Please read the above terms carefully, once you reach a deal with us, it means you fully accept these terms.

## Warranty

We have 12 months warranty of motherboard, motors and power. Except the assembled wearing parts, we have prepared a spare set of other wearing parts.

## Return

If the buyer has a return request, it must be submitted within 7 days after the delivery, and the buyer needs to pay all related costs for returning.

## Assembly

Due to the size of printer is large, in order to facilitate installation and transportation, we will make 80% assembly, balanced assembly need to be finished by the buyer. Don't worry, you can finish the rest 20% assembly within several hours by checking our assembly instruction.

After finishing the assembly by yourself, under our technical guidance, through continuous debugging, it can reach a good printing effect.

## Upgrade and modification

If the buyer modified our products without our permission under the demand of sales or upgrade, we will not provide one-year warranty and free replacement for accessories, but we still provide the technical support.



**24 HOURS**

CUSTOMER ONLINE





**LUOYANG DOWELL ELECTRONICS TECHNOLOGY CO., LTD**

**Address: Hi-tech zone, Luoyang city, 471002, China**

**Contact number: +86-17639138101**

**Email: sales@dowell3d.cn**

**Whatsapp: +86-17639138101**

**Wechat: dowell3d**

**www.dowell3d.cn**

**www.dowell3d.com.cn**

**www.dowell3dprinter.com**